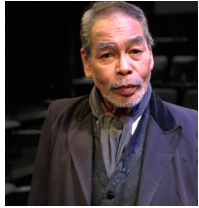


PRODUCTION CREW



Will Ha'o is a professional actor with stage credits that include 10 years in NYC and performances in almost every state in the union, in Canada, and Greece. He has performed in or directed all of Hawaiian Mission Houses' Cemetery Pupu Theatre shows.



Maile Speetjens serves as Associate Professor of Costume Design/Technology at the University of Hawaii at Mānoa. Originally from Kaua'i, Maile's work in costumes has spanned from Boston to Hawaii and in-between. Recent works include Pagliacci (Hawai'i Opera Theatre), Conversion of Ka'ahumanu (Kumu Kahua), Twelfth Night (Lyric Rep), Peace On Your Wings (Ohana Arts), and 'Au'a 'Ia: Holding On (UH Mānoa Hana Keaka).

Kevin Keaveney (portraying Henry P. Baldwin) is this year's scriptwriter

Special Thanks

Wendy Rice Peterson, Camille Lyons, and Susie Baldwin
Makawao Cemetery Association Board
Fred Baldwin Memorial Foundation
Haleakalā Ranch Company
Kaonoulu Ranch
Nicole Scharer Events and Catering

Hawaiian Mission Houses Historic Site and Archives (HMH) annual gala fundraiser to support our education programs

"Huaka'i: Ma Ō Ka 'Aina: Ma Ō Ke Kai" will be held September 14, 2024, 5:00 pm – 9:00 pm at The Royal Hawaiian Hotel, Monarch Room.



SCAN ME

Continue to support innovative programs and history education by scanning the QR Code above and donating to HMH today!



SCAN ME

Check our upcoming events on the HMH website by scanning the QR Code above!

Hawaiian Mission Houses
and Makawao Cemetery Association

present

MAKAWAO CEMETERY THEATRE

"HOW SWEET IT IS"

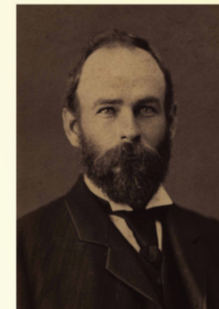
July 27 and 28, 2024

**3pm doors open
4pm Performances Start**

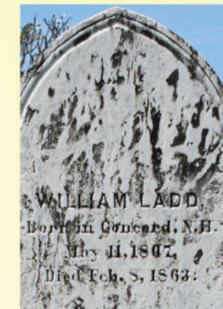


An Exploration of the Sugar Industry in Hawai'i

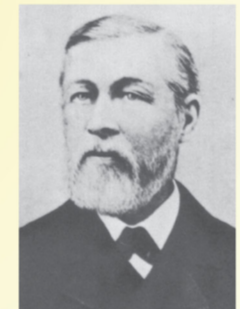
FEATURING PORTRAYALS OF



Henry P. Baldwin



William Ladd



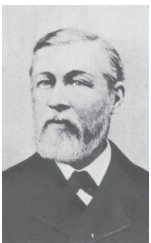
James Campbell

**FOR TICKETS AND INFORMATION
VISIT**

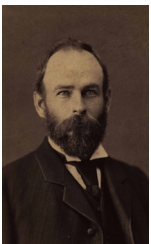
**WWW.MAUI-CEMETERY.COM
OR EMAIL US AT CDLYONS@HAWAII.RR.COM**

Co-Sponsored by
The Fred Baldwin Memorial Foundation
and Haleakala Ranch Company

PORTRAYALS



James Campbell (1826-1900) Born in Londonderry, Northern Ireland. At the age of 13, he took a ship and went to New York City. In 1841 was shipwrecked in the Tuamotu Islands. Making his way to Tahiti, he lived there for several years before going to Lahaina, Maui in 1850. In 1860 he co-founded Pioneer Mill Company and in 1863 the company bought the Lahaina Sugar Plantation. He sunk the first artesian wells on the Ewa plain, which opened up leeward O'ahu to more expansive sugar plantation operations. He also owned ranches at Hono'uli'uli and Kahuku, becoming one of the largest landowners and wealthiest people in Hawai'i.



Henry P. Baldwin (1842-1911) Born in Lahaina to missionary parents Rev. Dwight and Charlotte Fowler Baldwin. He attended Punahou School on O'ahu before returning to Maui. His first plantation manager job was for W.D. Alexander's rice plantation. He worked as a luna at the Waihe'e Plantation, managed by his future business partner Samuel T. Alexander. In 1869 they began planting in Hamakuapoko, Maui. He oversaw the construction of the Hamakua Ditch irrigation system and several mills on Maui. Alexander and Baldwin is still in business today.



William Ladd (1807-1863) Born in Concord, New Hampshire. He married Lucretia Goodale, a relative of Lucy Thurston, a missionary to Hawai'i. He sailed to Hawai'i with his friends William Hooper and Peter Brinsmade, arriving in 1833. They incorporated as Ladd & Company and opened up a dry goods store. In 1835, the company leased over 900 acres at Koloa, Kaua'i. Koloa Plantation was the first attempt at a commercial sugar cane plantation in Hawai'i. Initially the plantation did well, but the business partners took on more and more debt to finance improvements. Ladd & Company closed their store in Honolulu in 1844.



Pioneer Mill, unknown date
HMCS Library Photo Negative Collection, N-914

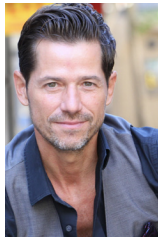
CAST



Christopher Denton Formally trained in theatre at Northern Arizona University, Christopher graduated with a Bachelor's Degree of Arts in Theatre Performance. After two years living abroad in Japan, he returned home to Arizona to attend film school, before eventually migrating to Hawaii. He has also portrayed Nathaniel Emerson, William C. Parke, Charles M. Cooke, and Charles R. Bishop for Hawaiian Mission Houses' Cemetery Pupu Theatre. He is portraying James Campbell.



Kevin Keaveney received his drama training at Yale University and spent 15 years as an actor in NYC where he was one of the founders of Outlet Theater Co., the arts collective Pathogen Arts, and the NY Strindberg Festival. On Oahu, he was the Artistic Director for Kailua Onstage Arts and has received several Po'okela Awards, as both an actor and a director. He has also portrayed Lorrin Andrews, William Richards, and Joseph Rock for Hawaiian Mission Houses' Cemetery Pupu Theatre. He is portraying Henry P. Baldwin.



Brandon Karrer is an experienced theatre actor who just a few years ago moved from Los Angeles to Hawaii. Originally from California Brandon spent years appearing on the stage in LA and San Francisco. He has studied at well known acting studios including the Janet Alhanti Studio, Howard Fine, The American Academy of Dramatic Arts, and the Ivana Chubbick Studios. Brandon recently has split his time between the stage and working as both a professional Voice Over and On-Camera actor. He is portraying William Ladd.



Pā'ia Mill, unknown date
HMCS Library Photo Negative Collection, N-1928